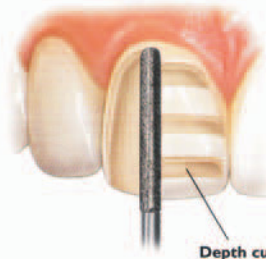


## VENEERS

### IPS EMPRESS® I, IPS EMPRESS® II

#### UNIFORM FACIAL PREPARATION

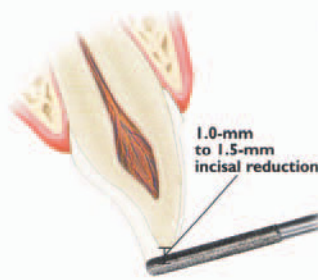
A medium grit, round-ended, diamond bur is used to remove a uniform thickness of facial enamel by joining the depth-cut grooves.



Depth cuts of 0.6-mm to 0.8-mm\*

#### INCISAL PREPARATION

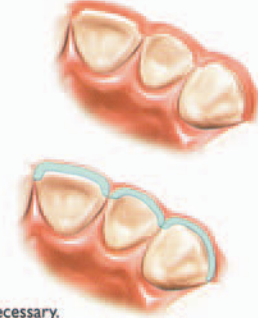
The diamond bur is angled to bevel back the incisal edge.



1.0-mm to 1.5-mm incisal reduction

#### CHAMFER MARGINS

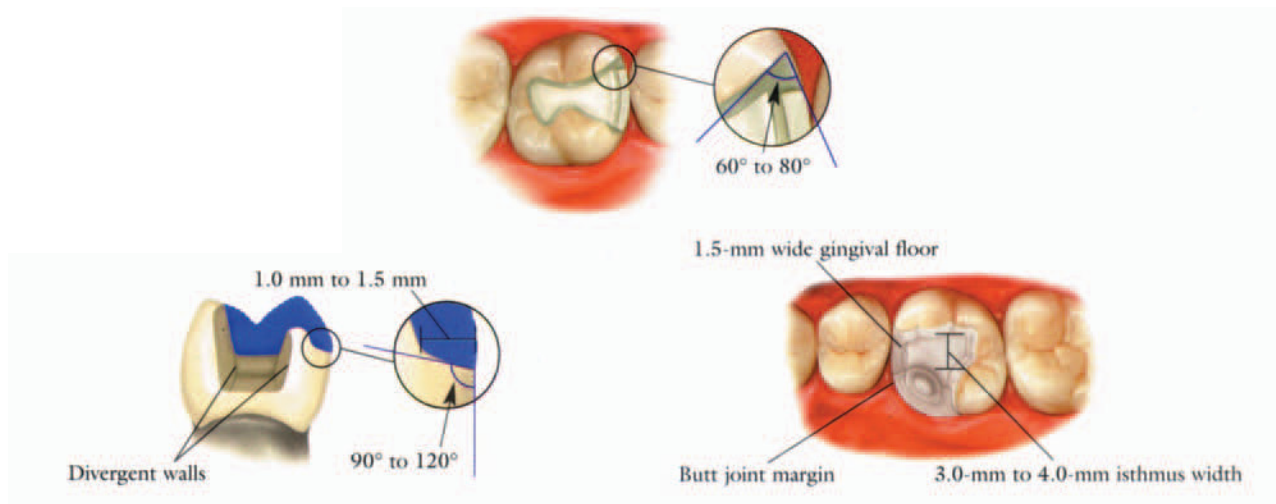
Correct preparation of the chamfer margins interproximally allows the appropriate bulk of porcelain.



\*Please note: For additional masking capabilities and/or layering techniques, further reduction may be necessary. Contact your laboratory for further information.

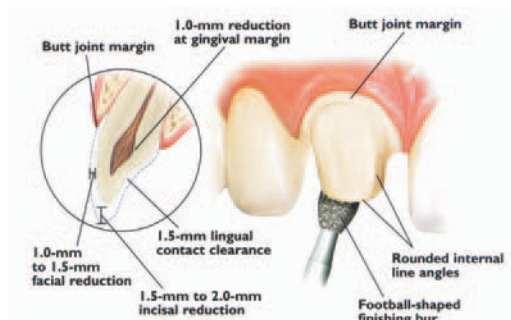
## INLAYS/ONLAYS

### IPS EMPRESS® I, IPS EMPRESS® II



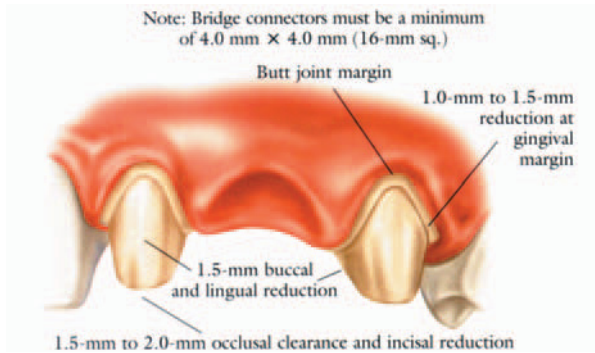
## ANTERIOR CROWNS

### IPS EMPRESS® I, IPS EMPRESS® II

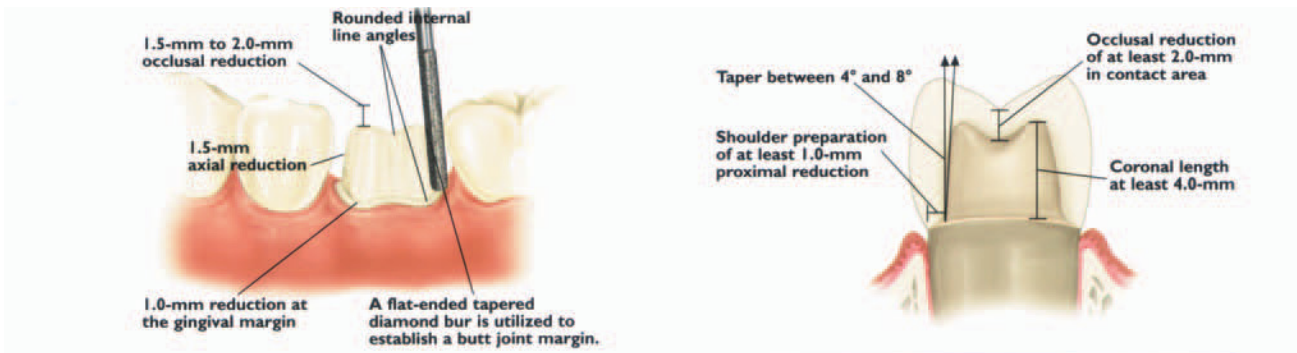


All prepared surfaces must be rounded on all metal-free restorations.

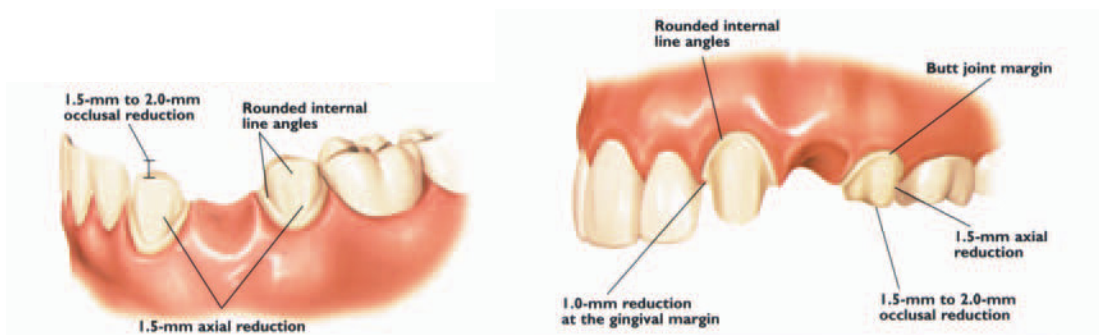
## ANTERIOR BRIDGES IPS EMPRESS® II



## POSTERIOR CROWNS IPS EMPRESS® I, IPS EMPRESS® II



## POSTERIOR BRIDGES IPS EMPRESS® II



All prepared surfaces must be rounded on all metal-free restorations.